



Transport of lactating cows



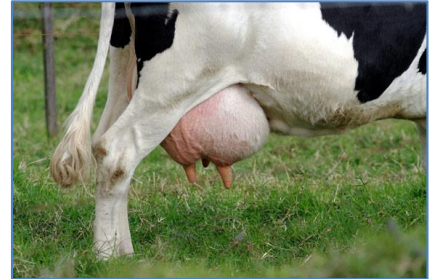
ANIMAL TRANSPORT GUIDES

For full guides and more information:
www.animaltransportguides.eu



Transport of lactating cows

Lactating cows are vulnerable animals and need to be transported with **special care**. Cows in milk that are not regularly milked **can suffer severe pain**, because of increasing pressure in the udder and the higher risk to develop mastitis or other illness. Special care and good transport practices can prevent this.



If a cow can not get up anymore (*downer cow*), call the veterinarian immediately!

Preparation for lactating cows

1

Remember - in the **first week after calving, transport is prohibited**

2

If lactating cows are not accompanied by their calves, they must be milked **at least every 12 hours**

3

If lactating cows are to be transported in long journeys, make sure that the control post(s) has **milking facilities**

4

Always **calmly unload** the cows into the milking parlor of the control post

5

Even better! **Provide water and feed** when milking and make sure that the cows can eat / drink before you load them to resume the journey



For lactating cows, optimum temperature is between 5°C to 15°C.

Below 5°C, cows need extra warmth - especially if air draught and high humidity.

Do not transport when over 30°C.